

J a s o n   S m i t h s o n   |   G l a s g o w   2 0 2 0



**Date**

25-27 September 2020  
30-1 November 2020  
13-15 November 2020

**Venue**

200 St Vincent Street  
Glasgow

**Price**

**£5400**  
Interest free  
finance available

## Course Overview

How do you begin to analyse and treat a restorative case?

From more simple cases such as a discolored non-vital central incisor right through to more complex cases such as generalized wear this course will take you from A-Z in a simple, logical, stepwise manner.

The course is suitable for all levels; from the newly qualified dentist looking to build on their BDS learning, right through to the experienced practitioner wishing to enhance their skills.

The format is evidence-based lectures with supporting literature (supplied), complimented with a large proportion of hands-on with over-the-shoulder coaching. Each weekend module will have an informal after hour's social session where delegates will have the opportunity to discuss thoughts and questions in more depth.



**63 hours CPD**



## • Weekend 1 3 days

# The Fundamentals of 21st Century Operative Dentistry

### • DAY 1

Introduction

**AM Lecture** The basics of Clinical Examination. The 30-minute consultation

**Lecture** Which teeth to save and which to extract? When is Cuspal Coverage required? Basic Biomechanics.

**Lecture** Treatment Planning (aesthetics | function | biomechanics | perio | endo)

**Case Scenarios** Treatment Planning

**PM Lecture** Photography Basic Camera Set Up for General practice. Which images to capture and why.

**Hands-On** Clinical Photography (Demo) followed by Hands-On Class \*  
\*Delegates should bring their own SLR Camera with Macro Lens and Ring flash

### • DAY 2

**AM Lecture** Occlusion in relation to restorative dentistry. Basic TM Joint anatomy and definition of terms (CR| MIP|Guidance). How to adjust a single restoration (posterior and anterior). Impression taking, facebow and occlusal records.

**Articulation** When and why. A whistle stop tour of the articulator. When to restore conformatively and when to re-organize. Occlusal Splints an overview.

**Hands-On** Fabricate an AMPSA splint, deprogram your own muscles of mastication

**PM Hands On** Step by step demo of equilibration by Jason on models followed by a detailed Q&A on occlusion.

### • DAY 3

**AM Lecture** Setting fees and how to cost out your plan so that the "complex" case doesn't become a "charity" case. How to present treatment options to patients so that they are engaged and on board rather than scared away. Presenting risks and benefits of treatment. Staging the treatment. Communicating fees to patients and informed consents.

**Case Scenarios** Treatment planning a case and presenting it to the patient (Live Demo)

**PM Lecture** The Essentials of Isolation; rubber dam application, floss ties, specialized rubber dam clamps and their application. General tips and tricks

**Hands-On** Rubber Dam and floss ties

**Lecture** Contemporary Caries Removable Protocols

**Lecture** Bleaching: whitening vital and non-vital teeth.



## • Weekend 2 3 days

### The Direct Restoration of Anterior Teeth with Composite Resin

Conventionally, discoloured teeth, diastemas, peg laterals and advanced wear cases are treated with indirect restorations: crowns and veneers.

This approach is well based in the literature and over time, has proven highly successful. However, in some cases it may prove expensive in terms of overall cost, treatment times and most critically loss of tooth structure.

This module is designed to revise core knowledge of colour, layering and polishing and to build on this to allow the delegate to confidently approach more challenging anterior cases with direct resin in combination with simple occlusal rehabilitation and bleaching where indicated.

#### • DAY 1

**AM Lecture** Basic color science and its application to direct and indirect restorations. Hue|Chroma|Value. Translucence. Opalescence. Communication with the dental lab.

**Hands On** Shade Taking Exercise.

**Lecture** Layering and polishing protocols for direct resin

**PM Hands On** The Class 4 Direct Resin (Layering and polishing exercise)

#### • DAY 2

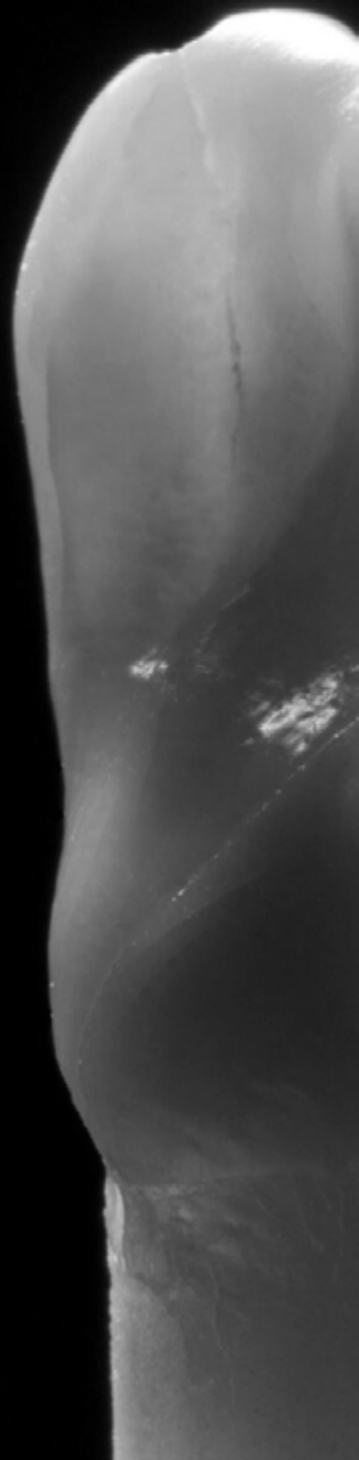
**AM Lecture/Hands-On** Diastema closure (Direct)

**PM Lecture/Hands-On** Direct restoration of the worn incisor tooth (simple veneer)

#### • DAY 3

**AM Lecture|Hands-On** Direct restoration of the discolored tooth

**PM Lecture|Hands-On** Direct restoration of the peg lateral incisor





## • Weekend 3 3 days

### Contemporary Ceramic Restorations

A comprehensive approach for the restoration of anterior and posterior teeth with all ceramic veneers, onlays and crowns.

The emphasis is on adhesive, minimally invasive tooth colored restorations: from preparation, through impression taking, provisionalisation and final cementation/finishing. Cutting edge, evidence based theoretical knowledge will be complemented by a strong hands on component.

#### • DAY 1

**AM|PM Lecture|Hands-On** The Ceramic Onlay, to include Gingival Margin Elevation (GME) and Immediate Dentin Seal (IDS)

**PM Lecture** The Ceramic Veneer

#### • DAY 2

**AM Hands-On** The Ceramic Veneer 2 Ways: The Classic Veneer Prep (1.1) and the Minimal Prep (2.1). Rapid provisionalisation

**PM Lecture** The Vertical Crown Prep. Indications, prep design, impressions and provisional. Lab procedures.

#### • DAY 3

**AM|PM: Hands-On** The Vertical Crown Prep molar and Central Incisor. Fabricate a provisional.

**DEMO** Adhesive Cementation of Ceramic Onlay with Heated Composite.

**Final Hour** Round Table Discussion and certificates





## Jason Smithson

Qualified at the Royal London Hospital in 1995; achieving a number of awards including The Constance Klein Memorial, The Stafford Millar, and The Malcolm Jenkins Scholarships, The American Association of Endodontics Prize and the Overall Award for Clinical Dentistry.

After spending 3 years in oral surgery residency in London and a further year practicing restorative dentistry in London's Harley Street Medical District, he relocated to Cornwall in the extreme southwest of England. Jason practices at Revitalise, Cornwall, UK where his main focus is microscope enhanced adhesive dentistry.

His specific interest is direct composite resin artistry and minimally invasive all ceramic restorations and he has presented to dentists locally, nationally and internationally (USA, Canada, Australia, New Zealand, South East Asia and Europe) on this topic.

He has given hands on programs in the UK, Europe, Asia, and North America on behalf of GC, Ivoclar, Kerr, Kulzer, Optident, Micerium, Carl Zeiss, Zumax, Global, Velopex and Triodent. He is a European "Key Opinion Leader" for Kulzer and is a member of the European Prosthodontic Advisory Board for GC Europe. Jason is Resident Faculty at The Centre for Esthetic Excellence, Chicago, USA. He is an Accredited International Trainer for Carl Zeiss Dental Academy.

Jason has achieved Diplomat Status in Restorative Dentistry from the Royal College of Surgeons (England).

He is on the Editorial Board of The Russian Journal of Esthetic Dentistry and has published numerous peer-reviewed articles on adhesive and aesthetic dentistry in both the UK and abroad. He is joint author of "Vertical Margin Finish Lines In Fixed Prosthodontics"

## Terms & Conditions

1. You agree to pay the course fees (plus VAT where applicable) to Glasgow Restorative Programme Ltd
2. Course fees should be settled in full not less than 30 days prior to course commencement. Interest free credit is available from Braemar Finance (subject to status) and should be agreed before a place on the course is assumed.
3. Fees include lunch and refreshments (but NOT accommodation and travel). You should advise us of any allergies or specific dietary requirements not less than 14 days in advance of Day 1.
4. Refunds will not be offered for cancellation with less than 60 days prior to commencement of the course. All refunds are subject to a cancellation fee of £100. Refunds for medical reasons must be supported by a letter from a medical practitioner.
5. If a module has to be rescheduled for reasons outside the control of the organizing body you will be offered a place on the next available module.
6. We will not be liable or responsible for any failure to perform, or delay in performance of, any of our obligations under these Terms that is caused by events outside our reasonable control ('Force Majeure Event').
7. Glasgow Restorative Programme Ltd are the owner(s) of all and any intellectual property rights in the content of the presentations, support literature and any other materials or documents provided in connection with the program.

## Dates & Venue

200 St Vincent Street, Glasgow G2 5SG

20-22 March 2020

24-26 April 2020

12-14 June 2020

## Price

£6000

**Interest free finance available**

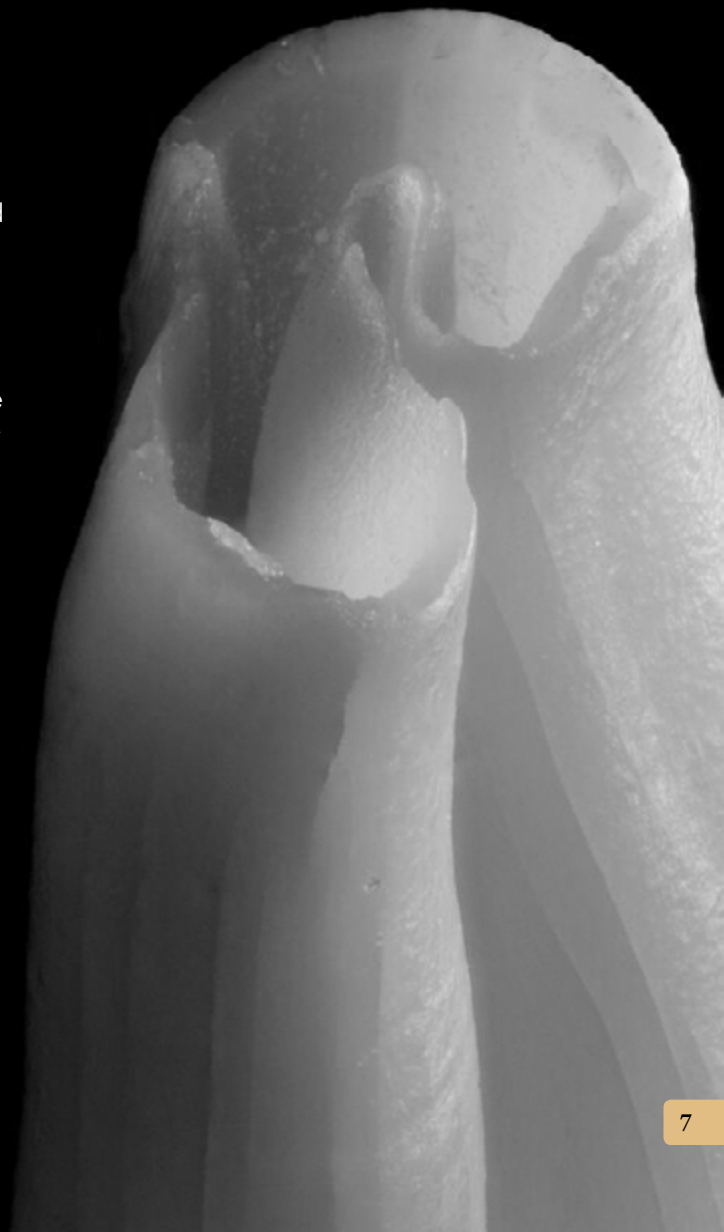
## Contact

Email:

[glasgowdentalcourses@outlook.com](mailto:glasgowdentalcourses@outlook.com)

Telephone:

07900 803738



Jason Smithson. Glasgow 2020  
The A-Z of Restorative Dentistry  
© Glasgow Restorative Programme Ltd

Email: [glasgowdentalcourses@outlook.com](mailto:glasgowdentalcourses@outlook.com)  
Tel: 07900 803738

